

RLTM PRO

Rugged | Accurate | Compact

RLTM PRO from IMES the specialist in line monitoring applications

Designed for new and retrofit applications IMES LTM enables Line tension, line speed and payout monitoring. Suitable for installation on a range of lines from conventional wire rope to composite, fibre lines and even cable pull systems.

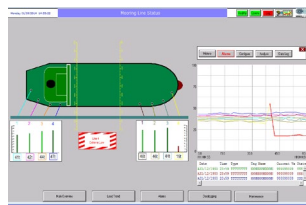


Features

- Capacity 5 to 650 tonne
- Line size 8mm to 128mm
- Fixings Stainless pins, fixings, sealed bearings
- Protection IP67, sensor protection plates, Marine coating, marine cable.

Options

- Payout speed, Direction, Length
- Hazardous Area rated systems
- Data Logging Software
- IMES **WinchView™** Software
- Wireless 2.4Ghz
- Ultra Rugged versions
- Fully Stainless Steel



Hand Held, Software, Graphical & Log, large LED Display