



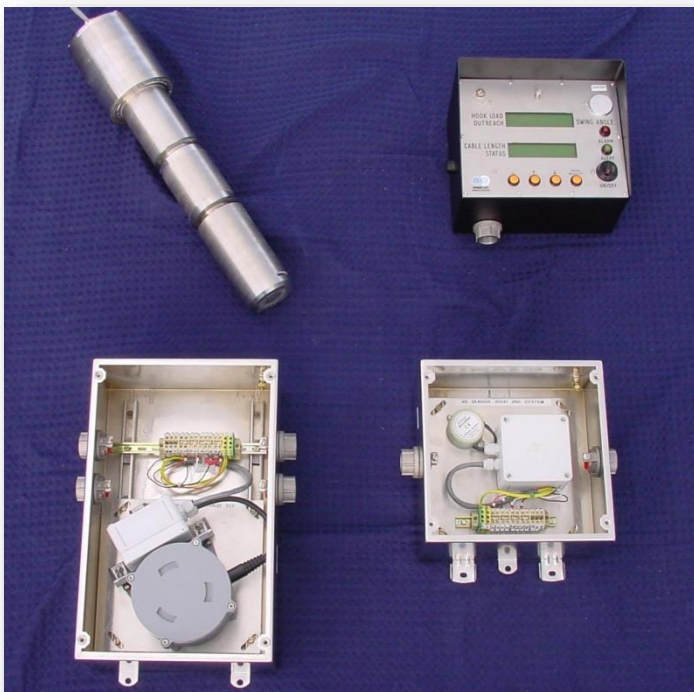
# Safe Load Indication (Mil Spec)

Imes SLI equipment was supplied for use in a number of cranes for the US Navy. The application required the measurement of a number of variables including:

Load, hook position, jib angle, slew angle, payout direction & speed.

The system was based on the Imes Systems SW100 Multi-function load monitoring display and Imes LCNET smart amplifiers. This was integrated with inclinometers, absolute encoders and dual axis (X, Y) load sensing pins.

The system was EMC tested in its entirety to extreme levels of 200V/metre.



*A typical Imes Safe Load Indication System*

## Imes Equipment & Systems:

- Load Cells, pins, angle transducers
- Bespoke Safe Load and Rated Capacity
- High Integrity Crane Monitoring
- Nuclear and Munitions Cranes
- Safety Integrity Systems



**Hazardous Area option**

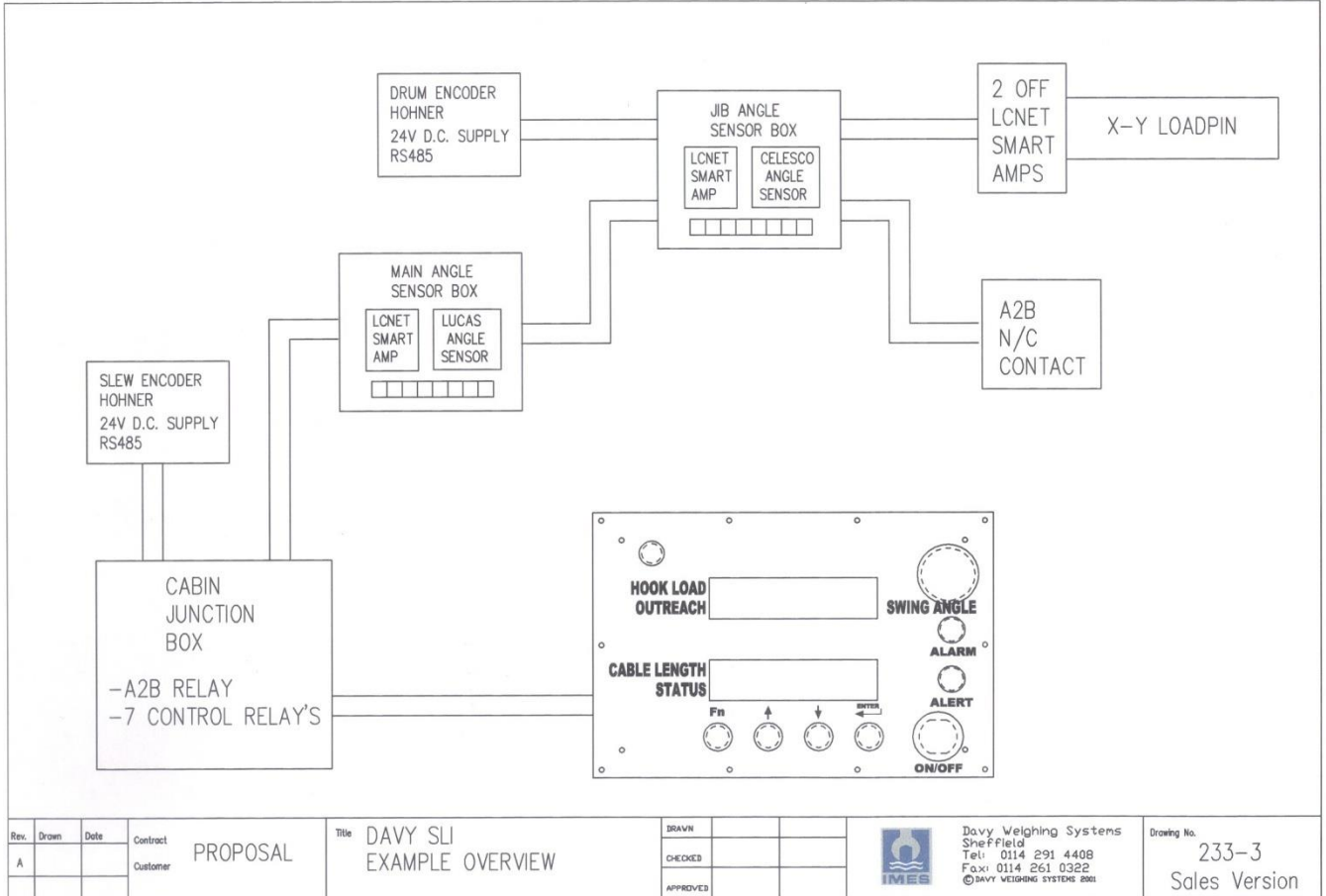


**RF Wireless option**



*Imes SW100 with dual 4 line display*

The Imes SLI system is completely configurable and provides the basis for many load monitoring, safe load indication and load moment indication systems. Options include advanced control, data-logging and high Integrity systems



**Imes Services:**

- Inspection Services ,LOLER
- Load Testing Services
- Engineering Design Services
- Manufacturing Services
- Project Management Services
- Supply of Offshore Personnel



A Seanamic Group Company

**umbilicals** international    **caley** international    **imes** international    **flexlife** international